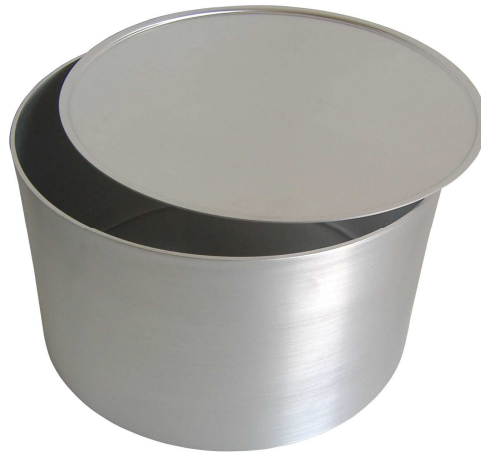




## ART. 31.04-B - Norma/Standard: EN 30-1-1

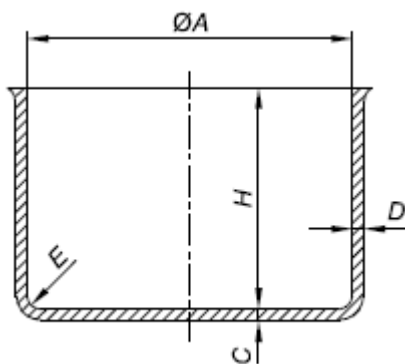


### RECIPIENTI PER PROVARE I BRUCIATORI A GAS

I recipienti sono realizzati in alluminio lega 1050 (Densità = 2700 kg./m<sup>3</sup>) e con dimensioni e peso in accordo alla fig. C.1 e tabella C.1. della Norma

### PANS FOR TESTING ON GAS BURNERS

These vessels are made of Aluminium alloy 1050 (Density 2700 kg./m<sup>3</sup>) and with dimensions and weight according to fig. C.1 and table C.1. of the standard.



#### Key

- A internal diameter measured at the top
- H internal height
- C thickness of base
- D thickness of the side
- E internal radius

Dim.	Pan designation														
A (mm)	60	80	100	120	140	160	180	200	220	240	260	280	300	320	340
H (mm)	60	70	80	90	100	110	120	130	140	150	160	170	180	190	200
C min. (mm)	1,2	1,4	1,4	1,6	1,6	1,8	2	2	2	2	2,5	2,5	2,5	2,5	2,5
D min. (mm)	1,1	1,3	1,3	1,5	1,5	1,5	1,5	1,5	1,5	1,5	1,8	1,8	1,8	1,8	1,8
E (mm)	1	1,5	1,5	2	2	2,5	2,5	2,5	3	3,5	3,5	3,5	3,5	3,5	4
Mass (g.)	42,9	82,4	120	220	270	340	440	540	680	800	965	1130	1350	1520	1800
Mass of lid (g.)				58	70	86	105	125	149	177	208	290	323	360	402